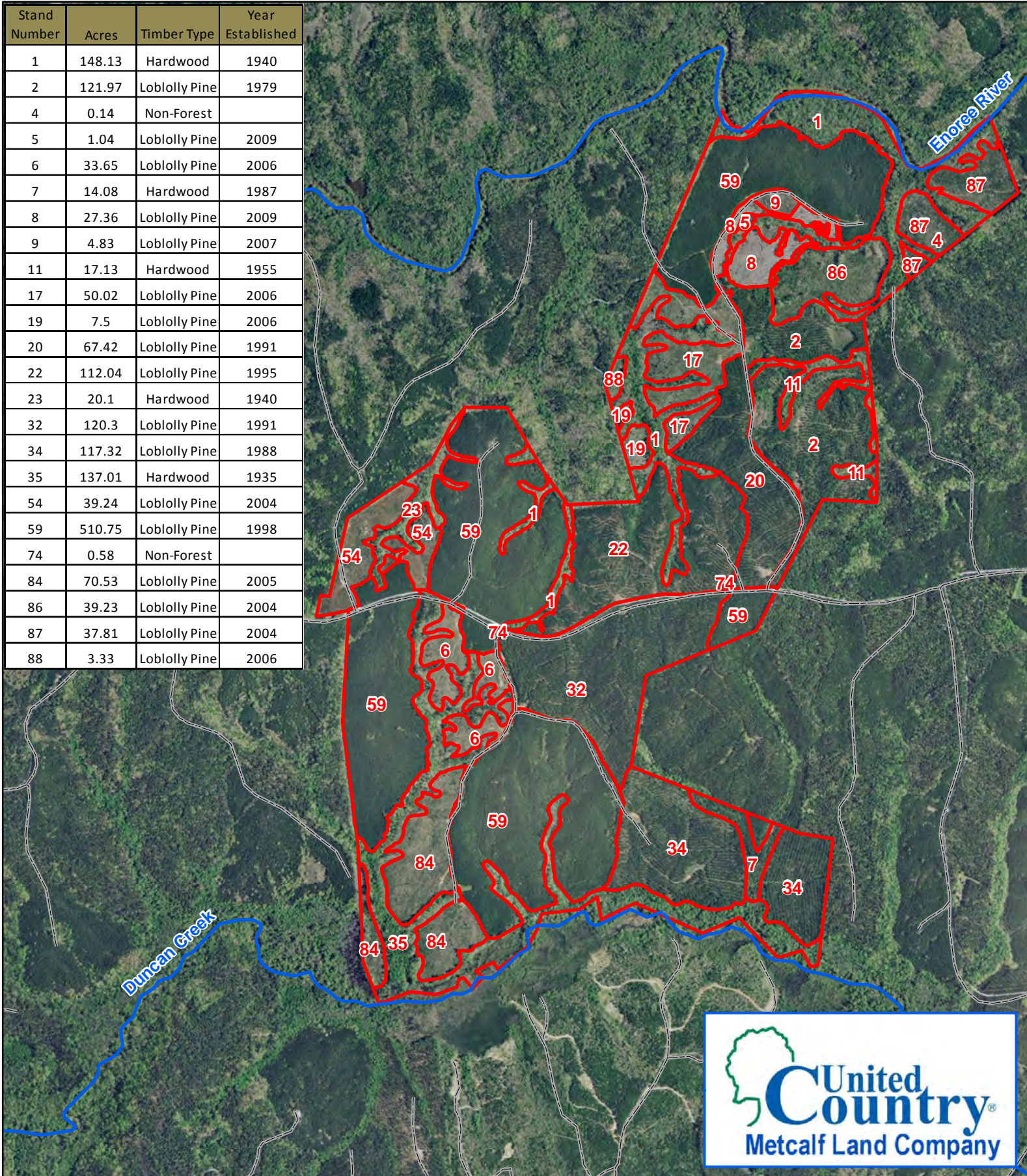




LB3003 1704+/- ac.

1 inch = 2,000 feet

Stand Number	Acres	Timber Type	Year Established
1	148.13	Hardwood	1940
2	121.97	Loblolly Pine	1979
4	0.14	Non-Forest	
5	1.04	Loblolly Pine	2009
6	33.65	Loblolly Pine	2006
7	14.08	Hardwood	1987
8	27.36	Loblolly Pine	2009
9	4.83	Loblolly Pine	2007
11	17.13	Hardwood	1955
17	50.02	Loblolly Pine	2006
19	7.5	Loblolly Pine	2006
20	67.42	Loblolly Pine	1991
22	112.04	Loblolly Pine	1995
23	20.1	Hardwood	1940
32	120.3	Loblolly Pine	1991
34	117.32	Loblolly Pine	1988
35	137.01	Hardwood	1935
54	39.24	Loblolly Pine	2004
59	510.75	Loblolly Pine	1998
74	0.58	Non-Forest	
84	70.53	Loblolly Pine	2005
86	39.23	Loblolly Pine	2004
87	37.81	Loblolly Pine	2004
88	3.33	Loblolly Pine	2006



The information provided on this map is believed to be accurate and is based on information available at this time, however, this information is in no way guaranteed.