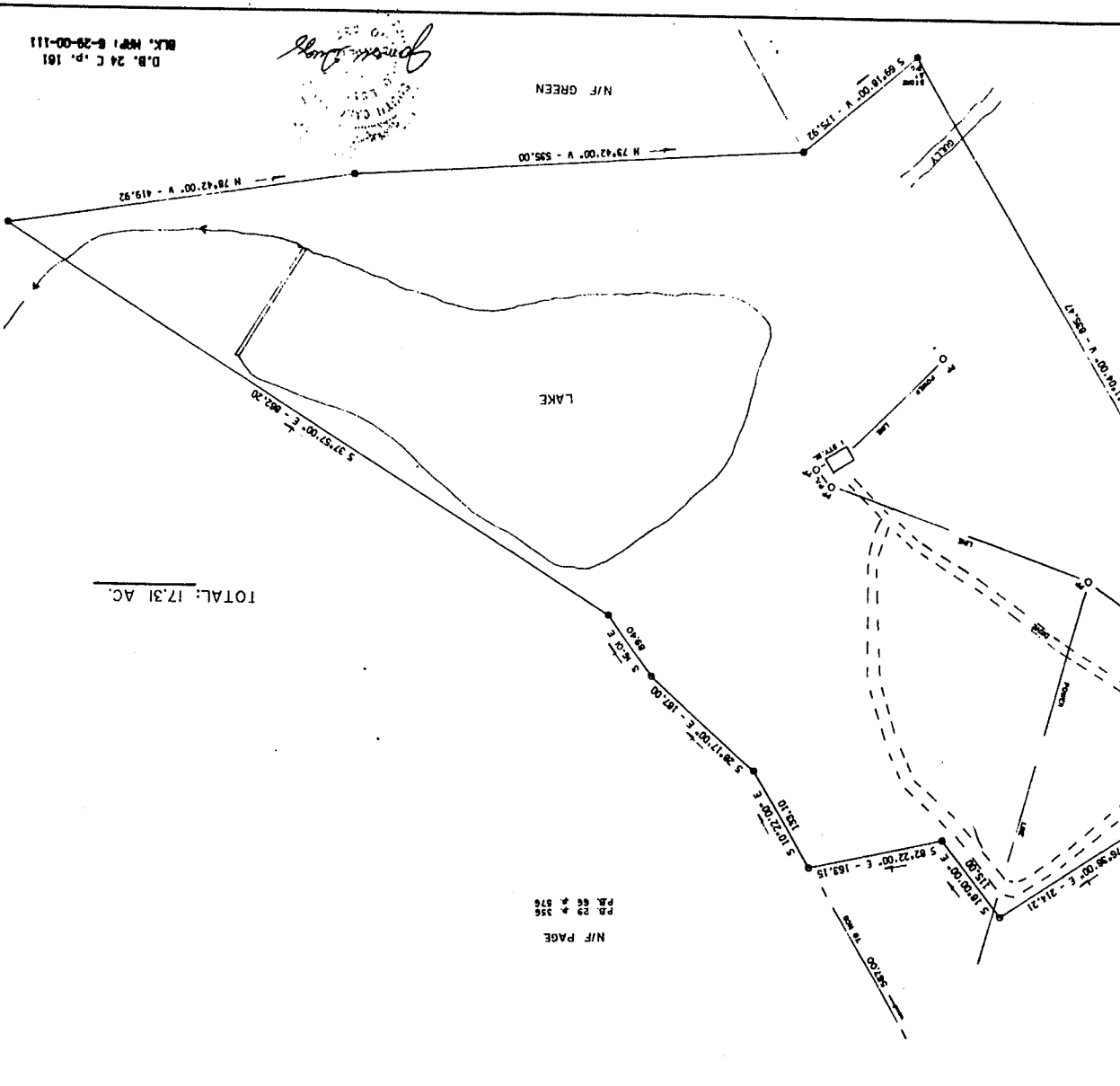


RECORDED
1988 APR -4 AM 13 35
R.M.C.
SPARTANBURG, S.C.

N/F A. L. McABEE SUBDIVISION
P.B. 88 # 34-35



James V. Gregory
JAMES V. GREGORY
REGISTERED SURVEYOR
S.P. 88 # 576

D.B. 24 C.P. 161
B.L.K. MAP 1 8-28-00-111



PLAT NO.	CONTR. NO.
NEAR ROEBUCK SPARTANBURG COUNTY, S.C.	
SCALE: 100 FEET/INCH	APPROVED BY: JVS
DATE: MARCH 19, 1988	REVISIONS BY:
DATE: MARCH 19, 1988	BY: JVS
DATE: MARCH 19, 1988	BY: JVS



JAMES V. GREGORY, P.L.S.
P.O. BOX 188, CAMPBELL, S.C.
REGISTRATION # 6329