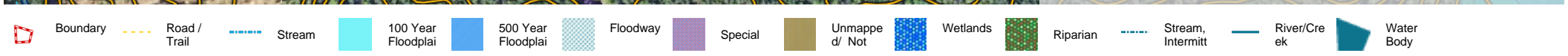
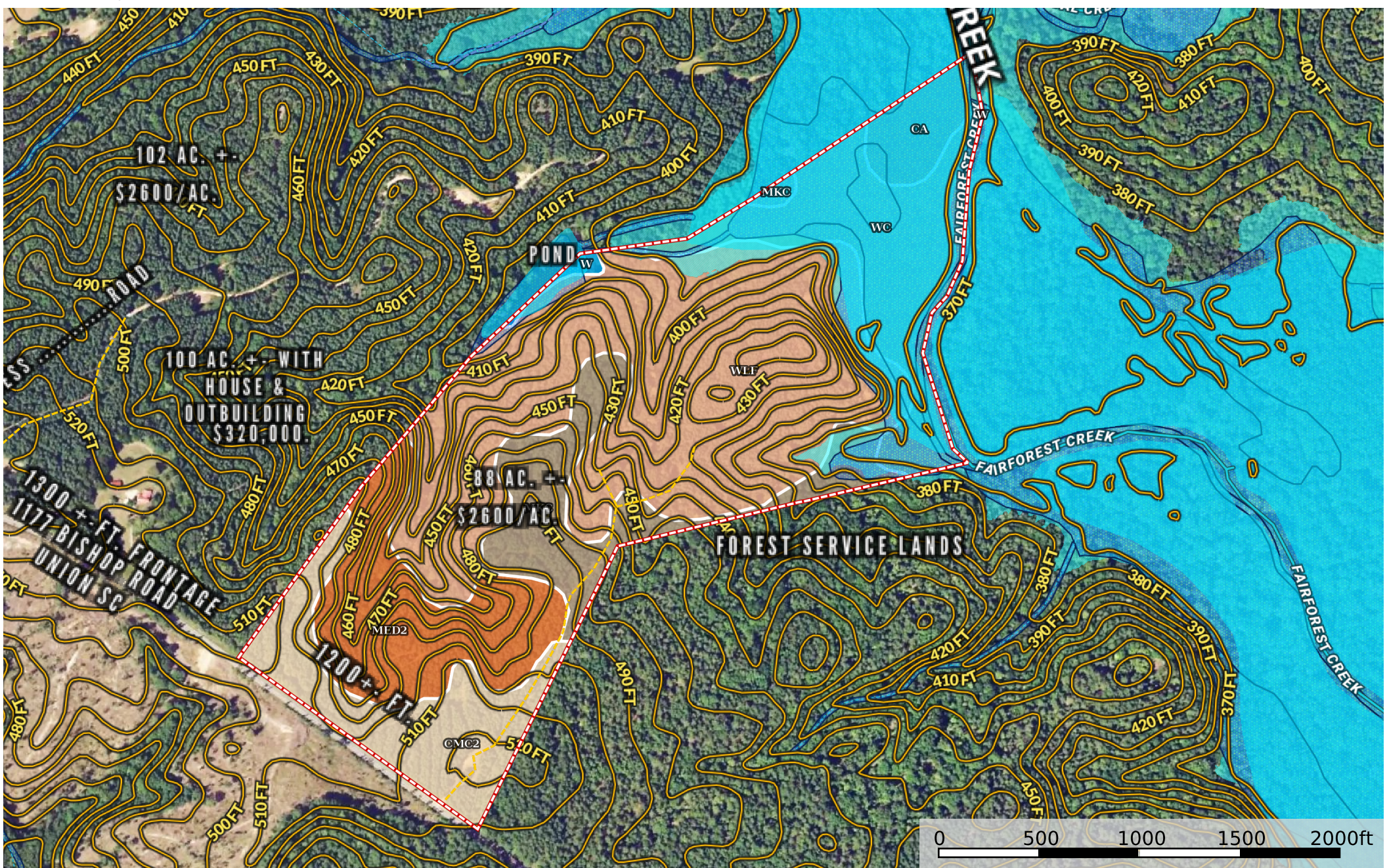


# Taylor-Taylor Fairforest Section

Union County, South Carolina, AC +/-



|  Boundary 88.1 ac









SOIL CODE	SOIL DESCRIPTION	ACRES	%	CAP
Wc	Wehadkee-Chewacla complex	13.2	15.0	4w
MeD2	Madison sandy clay loam, 10 to 15 percent slopes, eroded	12.1	13.7	6e
CmC2	Cecil sandy clay loam, 6 to 10 percent slopes, moderately eroded	10.3	11.74	4e
W	Water	0.4	0.5	-
Ca	Cartecay-Toccoa complex	3.0	3.38	3w
MkC	Mecklenburg sandy loam, 6 to 10 percent slopes	10.1	11.52	3e
WIF	Wilkes soils, 15 to 40 percent slopes	38.9	44.17	7e
TOTALS		88.1	100%	5.43

### Capability Legend

Increased Limitations and Hazards

Decreased Adaptability and Freedom of Choice Users

Land, Capability

								
	1	2	3	4	5	6	7	8
'Wild Life'	•	•	•	•	•	•	•	•
Forestry	•	•	•	•	•	•	•	
Limited	•	•	•	•	•	•	•	
Moderate	•	•	•	•	•	•		
Intense	•	•	•	•	•			
Limited	•	•	•	•				
Moderate	•	•	•					
Intense	•	•						
Very Intense	•							

### Grazing Cultivation

(c) climatic limitations (e) susceptibility to erosion

(s) soil limitations within the rooting zone (w) excess of water