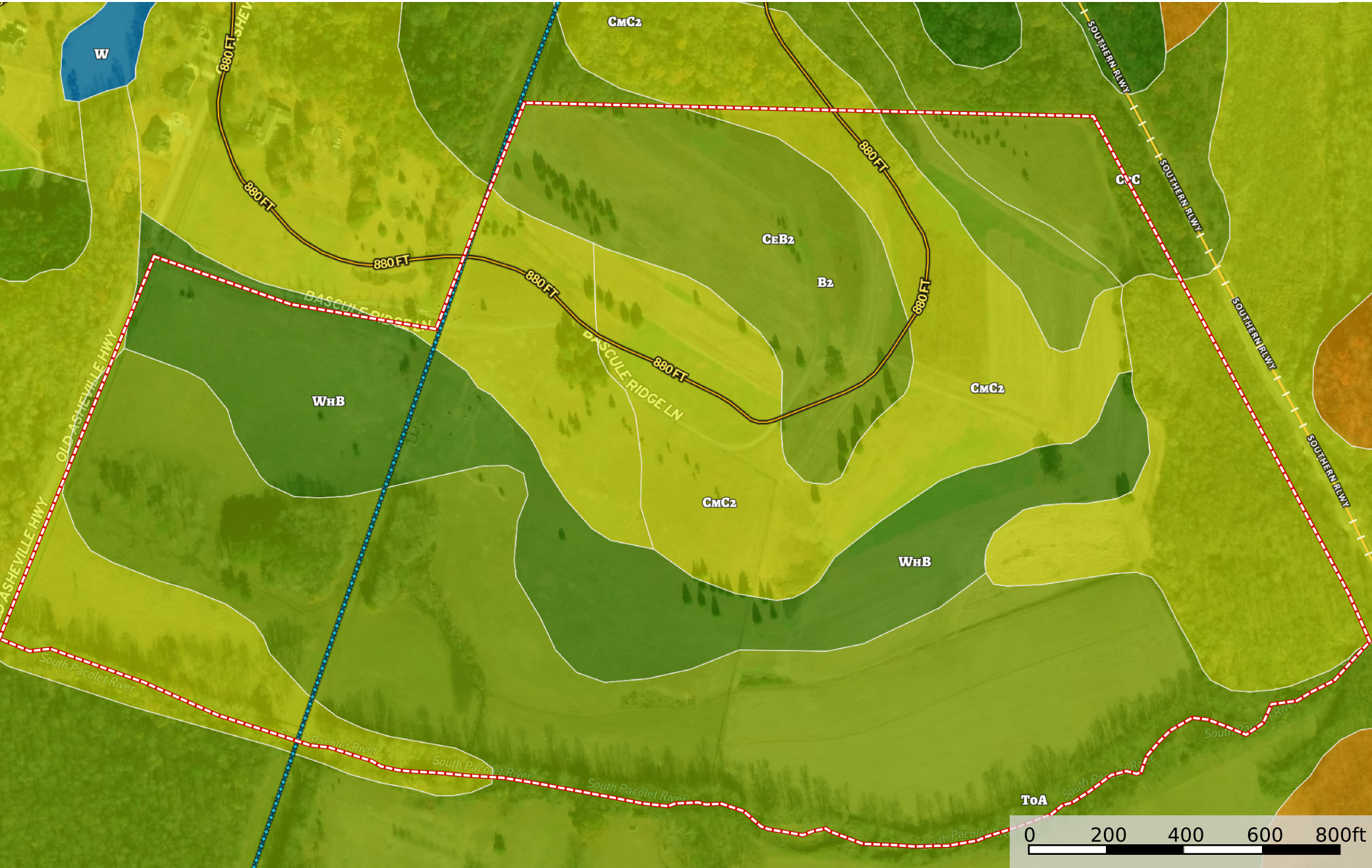


vanderbilt soil map
Spartanburg County, South Carolina, 113 AC +/-



- Boundary
- Secondary Sch. Dist.
- Elementary Sch. Dist.
- NOT AVAILABLE
- Voltage 0 - 99 KV
- Voltage 100 - 161 KV
- Voltage 220 - 287 KV
- Voltage 345 KV
- Voltage 500 KV