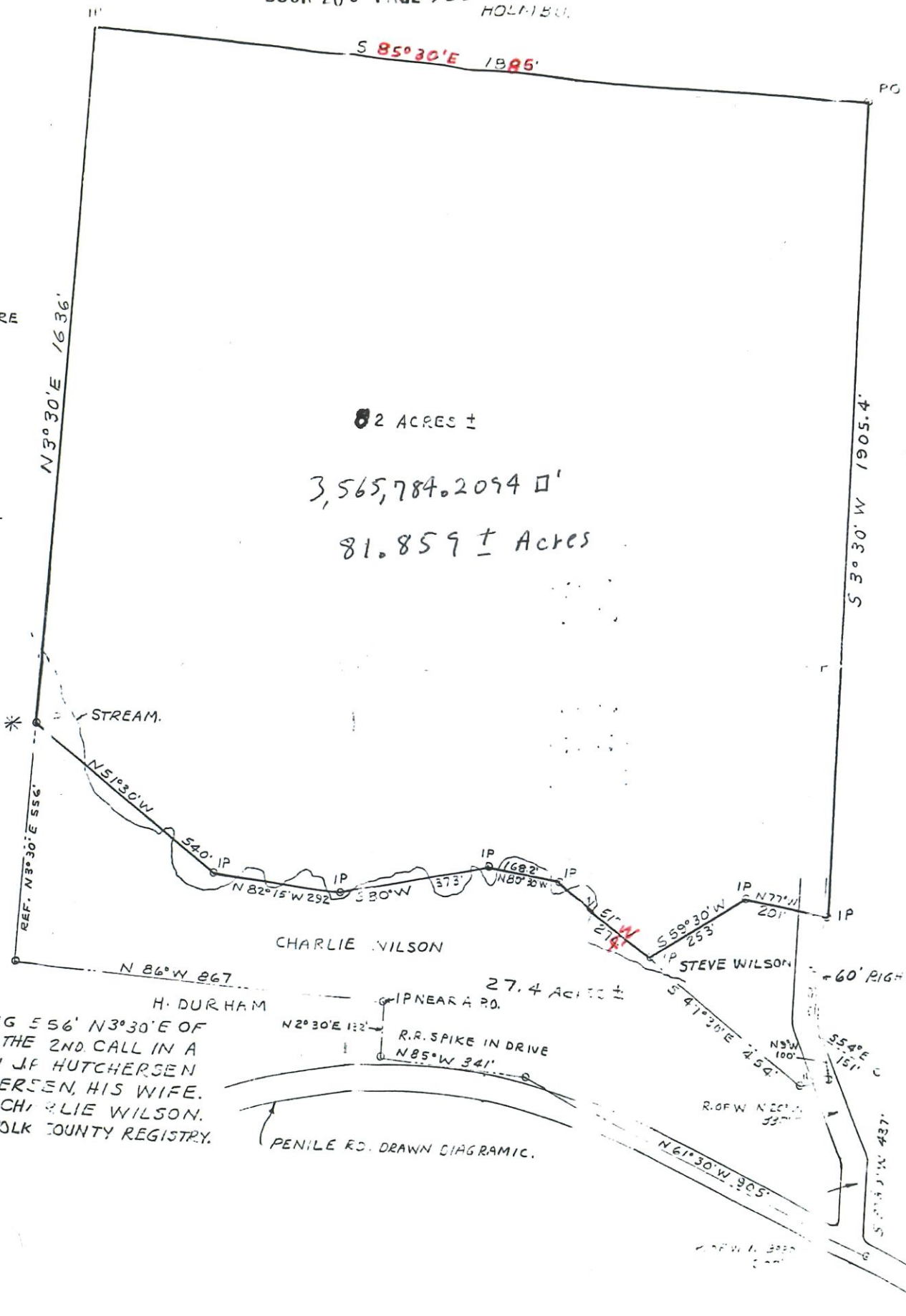


D. Mc ENTIRE



2 ACRES ±

3,565,784.2094 sq'

81.859 ± Acres

VAN VELZ

POINT BEING 556' N3°30'E OF
 POINT OF THE 2ND CALL IN A
 DEED FROM J.F. HUTCHERSEN
 TO CHARLIE WILSON,
 HIS WIFE.
 1934 TO CHARLIE WILSON.
 PAGE 28 POLK COUNTY REGISTRY.

PENILE RD. DRAWN DIAGRAMIC.