

PT-PT	BEARING	DISTANCE
11-13	S 21° 53' 06" E	279.15'
13-89	N 77° 00' 14" E	783.47'
89-90	S 15° 42' 51" W	350.69'
90-107	S 84° 50' 13" W	863.33'
107-10	N 19° 13' 46" E	105.68'
10-11	SEE CURVE DATA	

PT-PT	RADIUS POINT	DELTA	RADIUS
10-11	12	23° 30' 08" LT.	986.41'

PT-PT	BEARING	DISTANCE
107-90	N 84° 50' 13" E	863.33'
90-89	N 15° 42' 51" E	350.69'
89-116	N 76° 59' 32" E	1190.85'
116-115	S 69° 42' 50" W	385.07'
115-117	S 01° 12' 56" E	454.60'
117-17	S 39° 13' 37" W	443.62'
17-2143	S 29° 26' 30" W	205.36'
2143-2142	S 29° 16' 01" W	33.62'
2142-14	S 53° 09' 59" W	22.11'
14-4035	S 88° 55' 30" W	22.12'
4035-69	S 88° 55' 30" W	439.61'
69-40	N 07° 20' 05" E	178.30'
40-94	N 07° 20' 05" E	56.80'
94-93	N 45° 06' 31" W	214.33'
93-108	N 86° 35' 57" W	782.43'
108-107	N 19° 13' 34" E	50.38'

PT-PT	BEARING	DISTANCE
108-93	S 86° 35' 57" E	782.43'
93-94	S 45° 06' 31" E	214.33'
94-40	S 07° 20' 05" W	56.80'
40-110	S 89° 14' 47" W	1019.00'
110-108	N 19° 13' 42" E	283.22'

PT-PT	BEARING	DISTANCE
110-40	N 89° 14' 47" E	1019.00'
40-69	S 07° 20' 05" W	178.30'
69-34	S 88° 53' 34" W	141.56'
34-111	S 83° 57' 28" W	952.85'
111-110	N 19° 13' 42" E	282.21'

PT-PT	BEARING	DISTANCE
111-34	N 83° 57' 28" E	952.85'
34-69	N 88° 53' 34" E	141.56'
69-4035	N 88° 55' 30" E	439.61'
4035-14	N 88° 55' 30" E	22.12'
14-2141	S 53° 09' 59" W	61.11'
2141-2140	S 44° 15' 13" W	68.46'
2140-2139	S 48° 19' 28" W	93.95'
2139-2138	S 27° 20' 54" W	60.76'
2138-2137	S 25° 37' 28" E	38.69'
2137-2136	S 24° 10' 06" W	61.58'
2136-2135	S 01° 18' 42" W	35.34'
2135-2134	S 21° 06' 56" E	21.84'
2134-2133	S 04° 12' 04" E	59.44'
2133-2132	S 40° 45' 50" W	32.27'
2132-2131	S 14° 42' 20" W	28.16'
2131-2130	S 19° 27' 21" E	31.40'
2130-2129	S 09° 13' 12" E	31.59'
2129-2128	S 15° 12' 46" E	41.11'
2128-54	N 57° 10' 22" W	44.90'
54-71	N 57° 10' 22" W	521.91'
71-72	S 83° 42' 05" W	972.42'
72-9	N 19° 01' 49" E	177.17'
9-111	N 19° 13' 42" E	85.30'

PT-PT	BEARING	DISTANCE
60-58	N 18° 54' 46" W	251.37'
58-3	N 25° 06' 50" W	75.26'
3-56	N 26° 25' 13" W	216.27'

PT-PT	BEARING	DISTANCE
60-58	N 18° 54' 46" W	251.37'
58-3	N 25° 06' 50" W	75.26'
3-56	N 26° 25' 13" W	216.27'

PT-PT	BEARING	DISTANCE
60-58	N 18° 54' 46" W	251.37'
58-3	N 25° 06' 50" W	75.26'
3-56	N 26° 25' 13" W	216.27'

PT-PT	BEARING	DISTANCE
60-58	N 18° 54' 46" W	251.37'
58-3	N 25° 06' 50" W	75.26'
3-56	N 26° 25' 13" W	216.27'

PT-PT	RADIUS POINT	DELTA	RADIUS
5-6	7	42° 16' 22" RT.	699.33'

PT-PT	CHORD BEARING	CHORD DISTANCE	ARC LENGTH
5-6	N 07° 01' 37" W	504.34'	515.96'

PT-PT	BEARING	DISTANCE
55-45	N 65° 08' 59" E	1389.44'
45-2125	N 65° 08' 59" E	20.02'
2125-2124	S 02° 30' 12" W	27.73'
2124-2123	S 20° 35' 45" E	46.20'
2123-15	S 01° 39' 02" W	8.80'
15-2122	S 01° 39' 02" W	39.08'
2122-120	S 12° 19' 22" W	129.32'
120-27	S 02° 14' 04" W	45.26'
27-119	N 86° 48' 59" W	11.95'
119-123	N 86° 48' 56" W	198.95'
123-57	S 02° 22' 31" W	357.50'
57-56	S 80° 56' 22" W	953.53'
56-55	N 26° 25' 13" W	216.27'

PT-PT	RADIUS POINT	DELTA	RADIUS
58-3	4	2° 51' 20" LT.	1510.38'

PT-PT	BEARING	DISTANCE
56-57	N 80° 56' 22" E	953.53'
57-59	S 02° 22' 31" W	237.01'
59-58	S 78° 58' 43" W	827.35'
58-3	SEE CURVE DATA	
3-56	N 26° 25' 13" W	197.27'

PT-PT	RADIUS POINT	DELTA	RADIUS
58-3	4	2° 51' 20" LT.	1510.38'

PT-PT	BEARING	DISTANCE
58-59	N 78° 58' 43" E	827.35'
59-118	S 02° 22' 31" W	134.62'
118-61	S 03° 47' 52" W	197.24'
61-60	S 84° 48' 40" W	714.90'
60-58	SEE CURVE DATA	

PT-PT	RADIUS POINT	DELTA	RADIUS
60-58	4	9° 32' 49" LT.	1510.38'

PT-PT	BEARING	DISTANCE
60-61	N 84° 48' 40" E	714.90'
61-63	S 03° 47' 52" W	352.37'
63-62	S 89° 23' 19" W	644.24'
62-2	N 05° 00' 46" W	16.67'
2-60	SEE CURVE DATA	

PT-PT	RADIUS POINT	DELTA	RADIUS
2-60	4	10° 39' 24" LT.	1510.38'

PT-PT	BEARING	DISTANCE
60-61	N 84° 48' 40" E	714.90'
61-63	S 03° 47' 52" W	352.37'
63-62	S 89° 23' 19" W	644.24'
62-2	N 05° 00' 46" W	16.67'
2-60	SEE CURVE DATA	

PT-PT	RADIUS POINT	DELTA	RADIUS
2-60	4	10° 39' 24" LT.	1510.38'

PT-PT	BEARING	DISTANCE
72-71	N 83° 42' 05" E	972.42'
71-54	S 57° 10' 22" W	521.91'
54-2128	S 57° 10' 22" E	44.90'
2128-2127	S 08° 00' 47" W	36.65'
2127-2126	S 46° 59' 07" W	26.64'
2126-2125	S 29° 09' 32" W	38.59'
2125-45	S 65° 08' 59" W	20.02'
45-55	S 65° 08' 59" W	1389.44'
55-5	N 26° 25' 13" W	247.36'
5-6	SEE CURVE DATA	
6-8	N 17° 13' 16" E	107.20'
8-72	N 19° 01' 49" E	59.89'

PT-PT	RADIUS POINT	DELTA	RADIUS
5-6	7	42° 16' 22" RT.	699.33'

PT-PT	CHORD BEARING	CHORD DISTANCE	ARC LENGTH
5-6	N 07° 01' 37" W	504.34'	515.96'

PT-PT	RADIUS POINT	DELTA	RADIUS
5-6	7	42° 16' 22" RT.	699.33'

PT-PT	CHORD BEARING	CHORD DISTANCE	ARC LENGTH
5-6	N 07° 01' 37" W	504.34'	515.96'

PT-PT	BEARING	DISTANCE
62-63	N 89° 23' 19" E	644.24'
63-65	S 03° 47' 52" W	355.82'
65-64	S 89° 34' 28" W	589.73'
64-62	N 05° 00' 46" W	353.90'

PT-PT	BEARING	DISTANCE
64-65	N 89° 34' 28" E	589.73'
65-126	S 03° 47' 51" W	393.01'
126-103	S 88° 45' 49" W	528.79'
103-64	N 05° 00' 46" W	400.71'

PT-PT	BEARING	DISTANCE
62-63	N 89° 23' 19" E	644.24'
63-65	S 03° 47' 52" W	355.82'
65-64	S 89° 34' 28" W	589.73'
64-62	N 05° 00' 46" W	353.90'

PT-PT	RADIUS POINT	DELTA	RADIUS
58-3	4	2° 51' 20" LT.	1510.38'

PT-PT	BEARING	DISTANCE
62-63	N 89° 23' 19" E	644.24'
63-65	S 03° 47' 52" W	355.82'
65-64	S 89° 34' 28" W	589.73'
64-62	N 05° 00' 46" W	353.90'

PT-PT	RADIUS POINT	DELTA	RADIUS
60-58	4	9° 32' 49" LT.	1510.38'

PT-PT	BEARING	DISTANCE
60-61	N 84° 48' 40" E	714.90'
61-63	S 03° 47' 52" W	352.37'
63-62	S 89° 23' 19" W	644.24'
62-2	N 05° 00' 46" W	16.67'
2-60	SEE CURVE DATA	

PT-PT	RADIUS POINT	DELTA	RADIUS
2-60	4	10° 39' 24" LT.	1510.38'

PT-PT	BEARING	DISTANCE
60-61	N 84° 48' 40" E	714.90'
61-63	S 03° 47' 52" W	352.37'
63-62	S 89° 23' 19" W	644.24'
62-2	N 05° 00' 46" W	16.67'
2-60	SEE CURVE DATA	

PT-PT	RADIUS POINT	DELTA	RADIUS
2-60	4	10° 39' 24" LT.	1510.38'

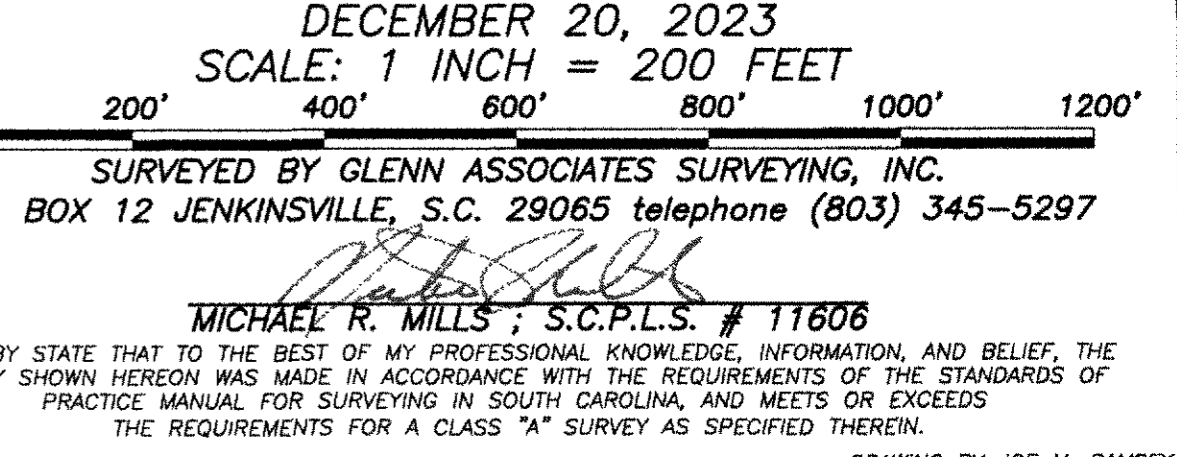
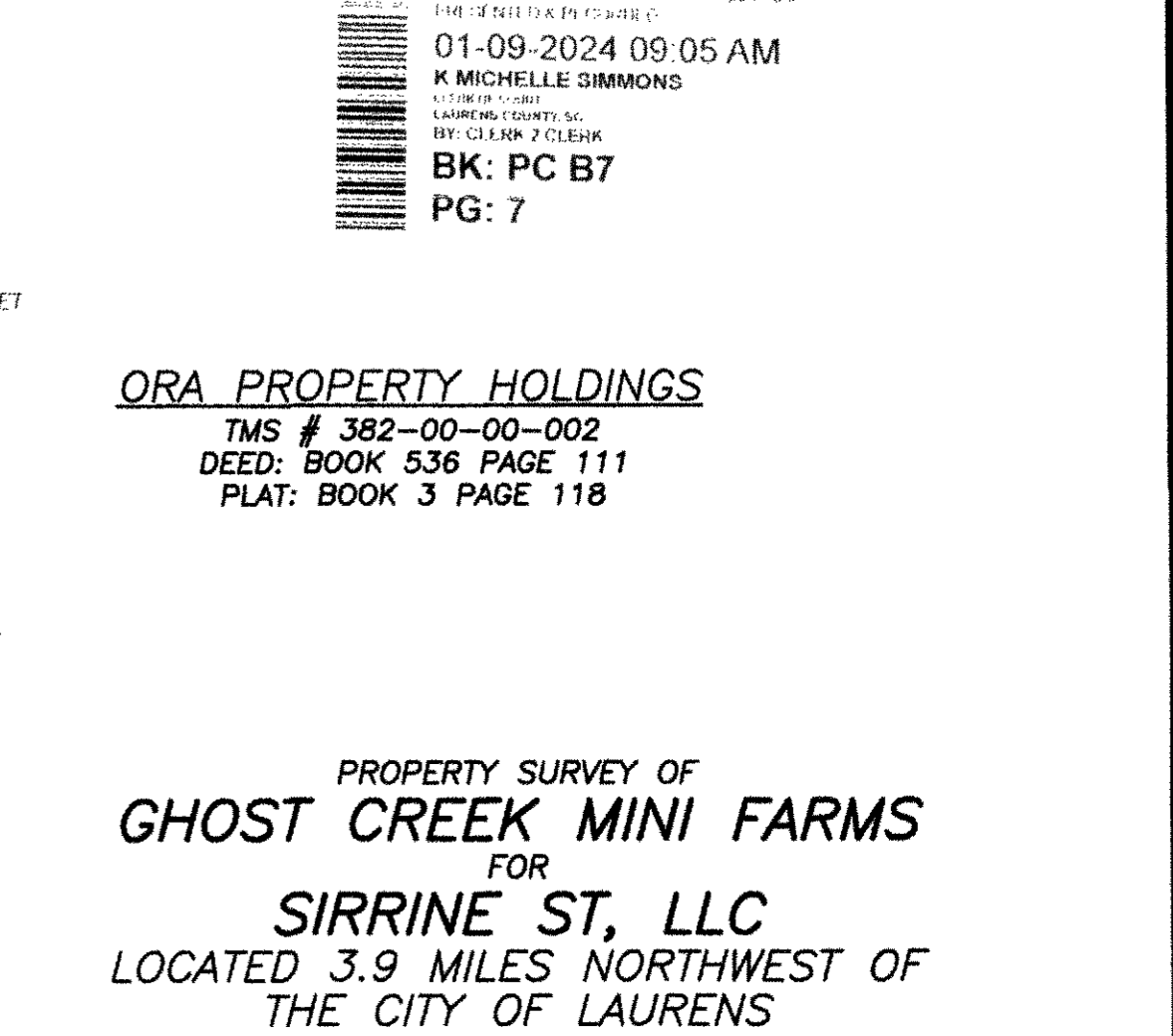
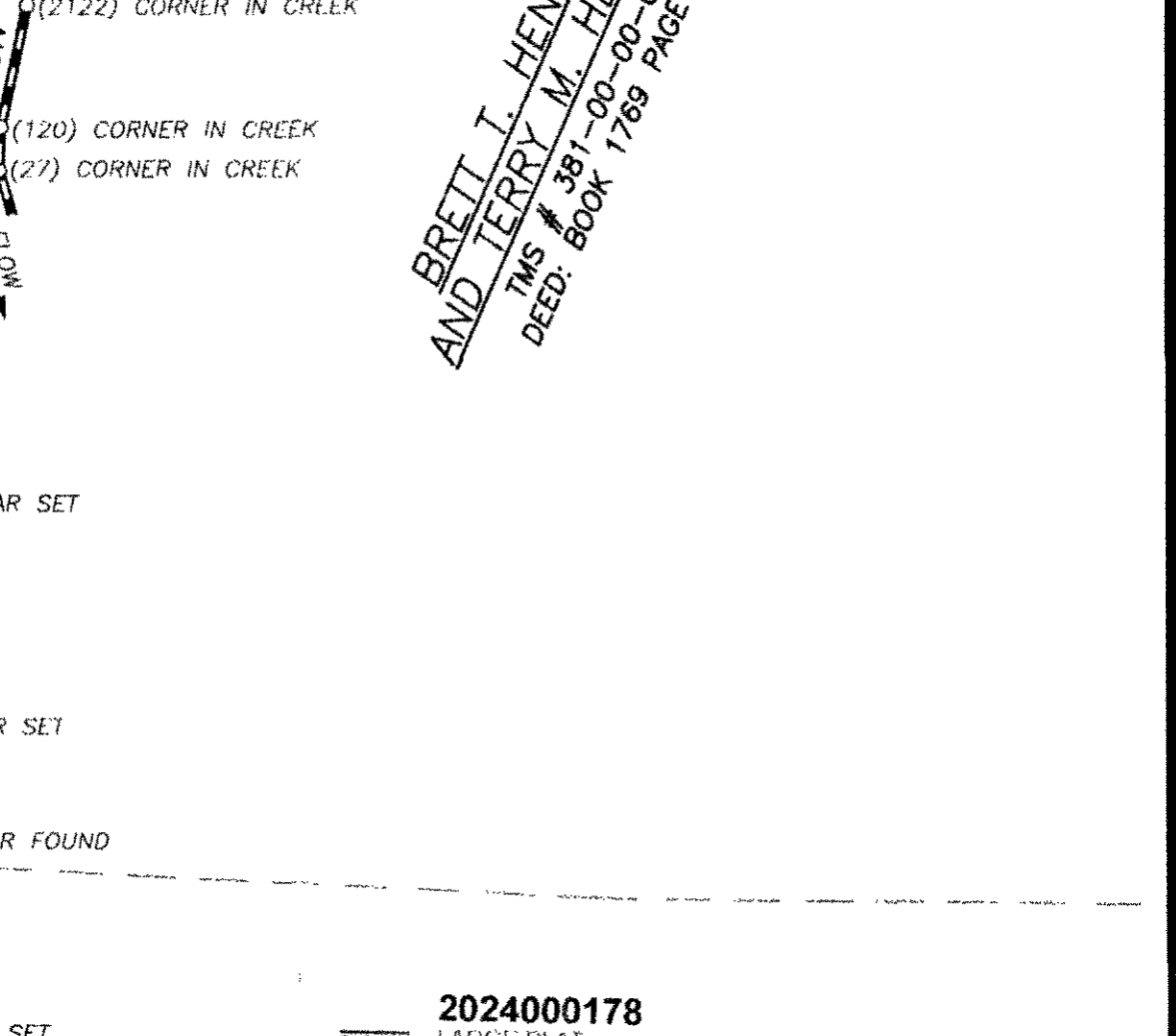
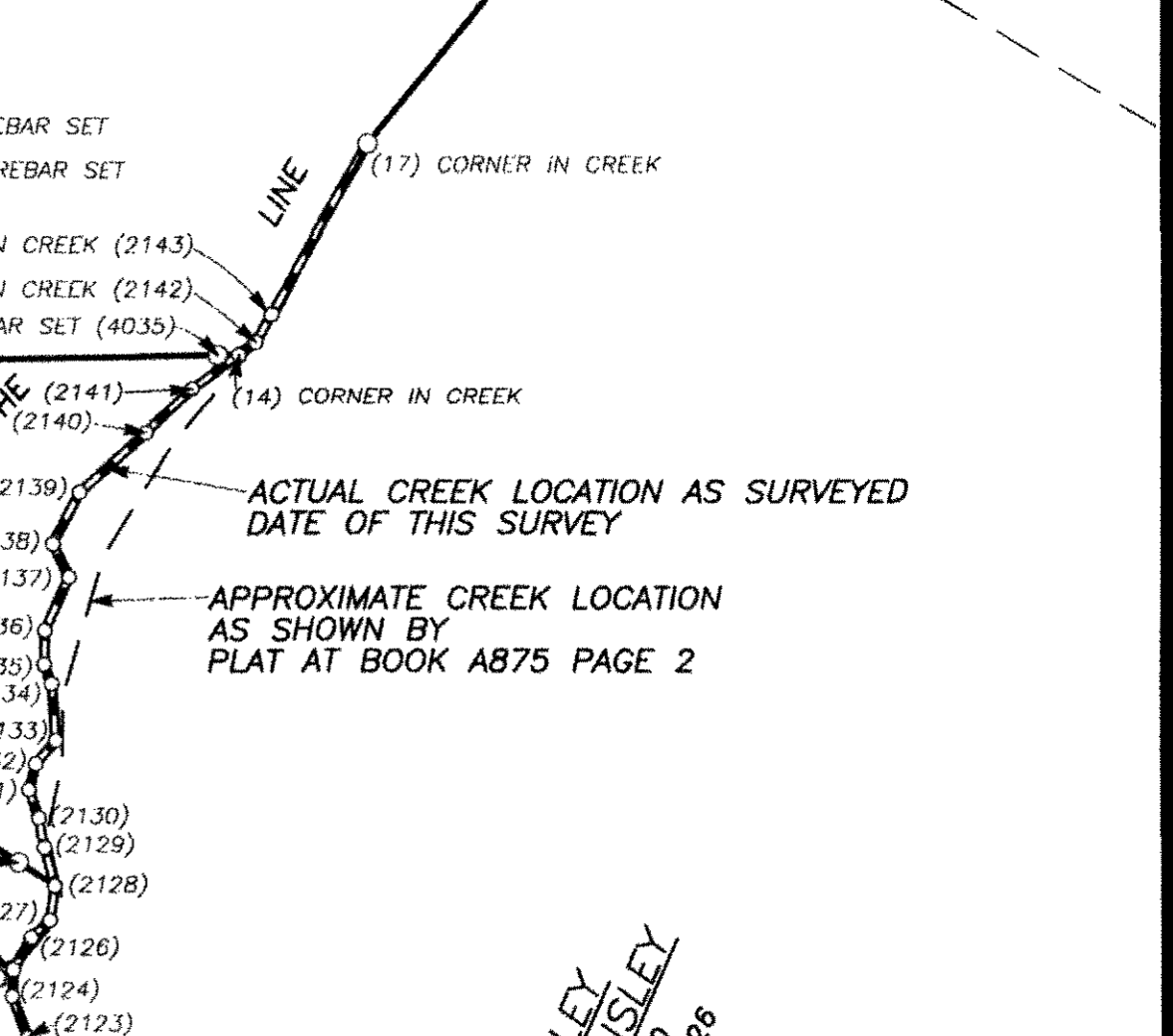
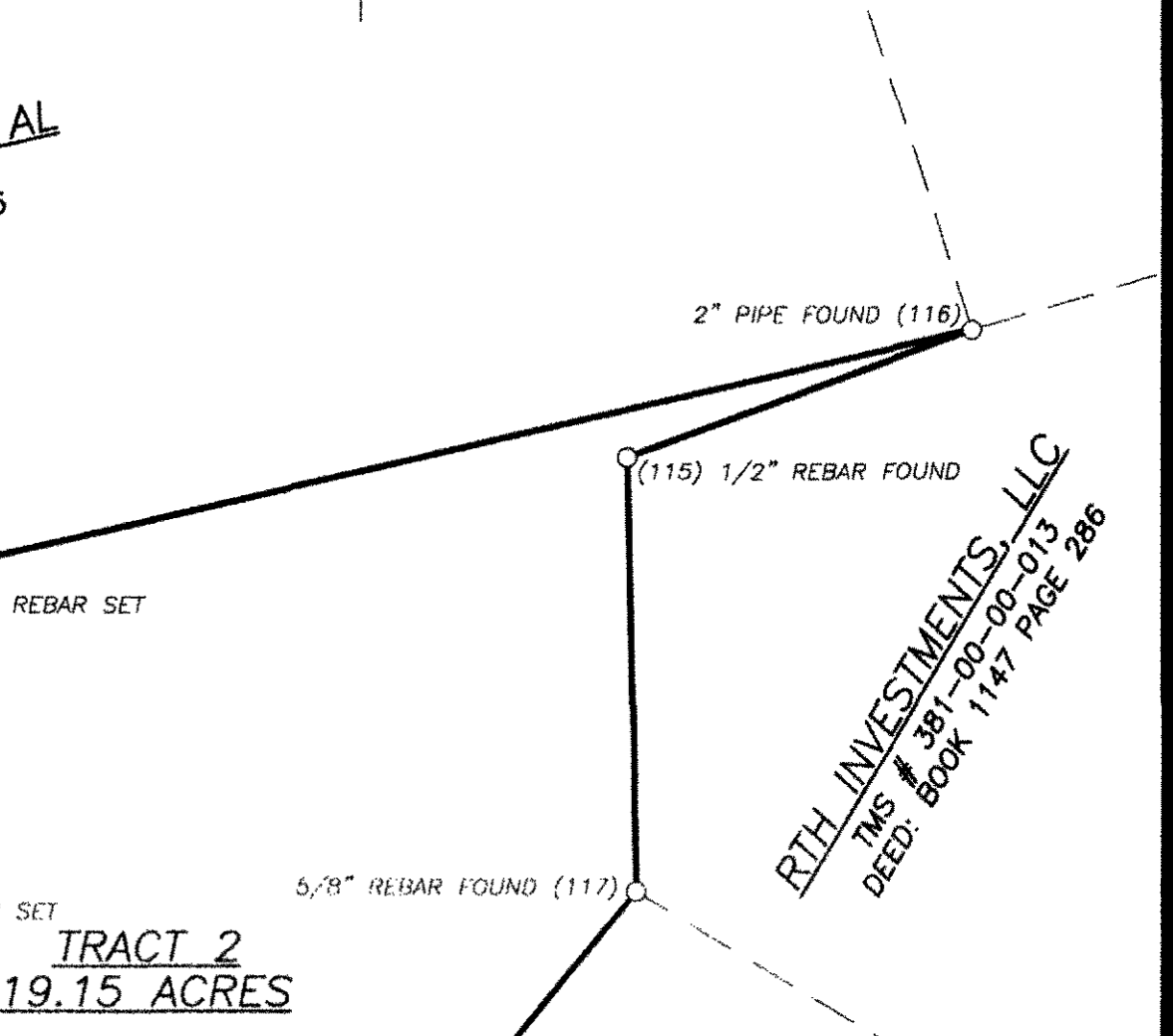
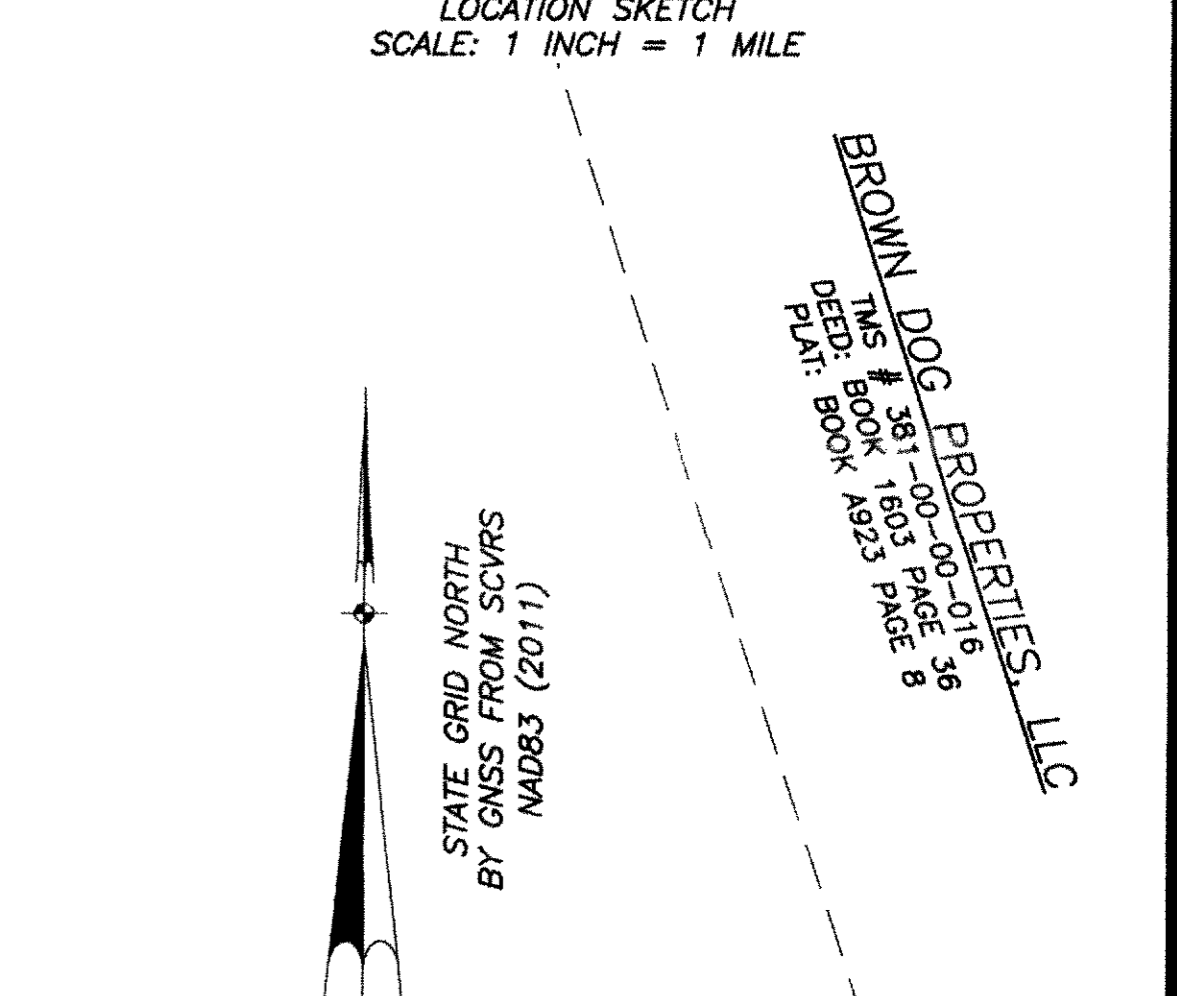
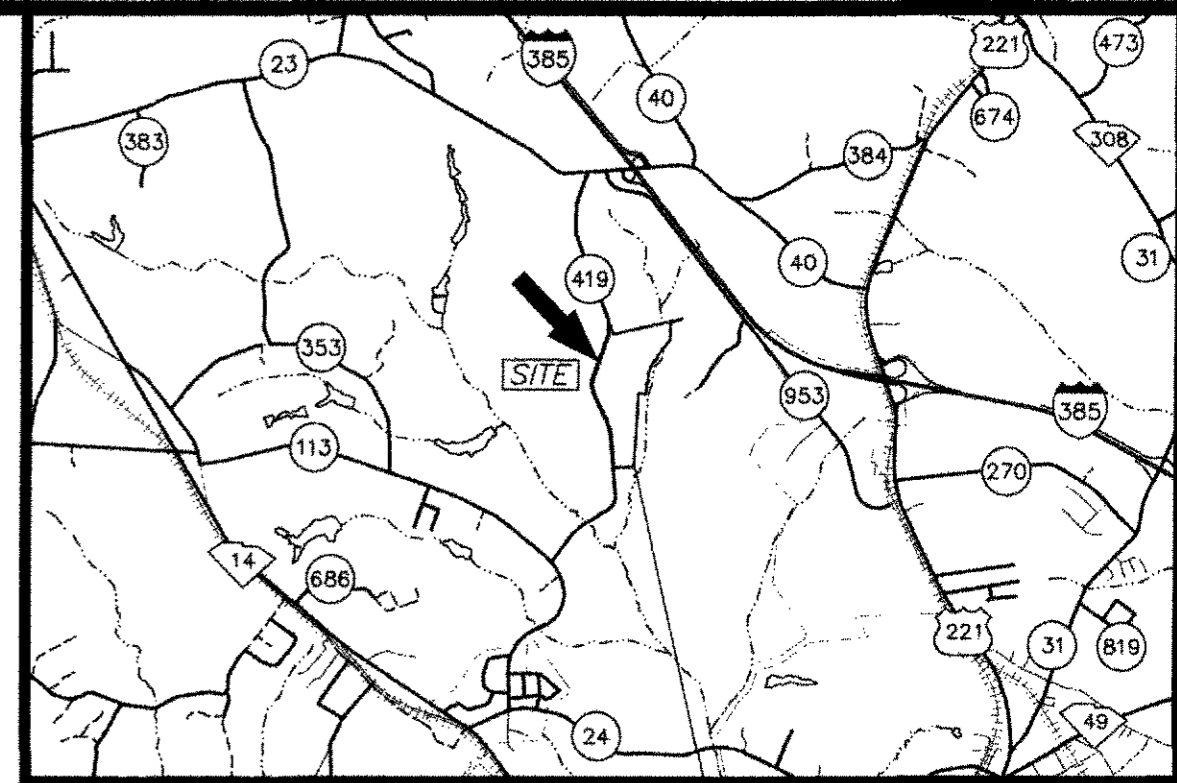
PT-PT	BEARING	DISTANCE
72-71	N 83° 42' 05" E	972.42'
71-54	S 57° 10' 22" W	521.91'
54-2128	S 57° 10' 22" E	44.90'
2128-2127	S 08° 00' 47" W	36.65'
2127-2126	S 46° 59' 07" W	26.64'
2126-2125	S 29° 09' 32" W	38.59'
2125-45	S 65° 08' 59" W	20.02'
45-55	S 65° 08' 59" W	1389.44'
55-5	N 26° 25' 13" W	247.36'
5-6	SEE CURVE DATA	
6-8	N 17° 13' 16" E	107.20'
8-72	N 19° 01' 49" E	59.89'

PT-PT	RADIUS POINT	DELTA	RADIUS
5-6	7	42° 16' 22" RT.	699.33'

PT-PT	CHORD BEARING	CHORD DISTANCE	ARC LENGTH
5-6	N 07° 01' 37" W	504.34'	515.96'

PT-PT	RADIUS POINT	DELTA	RADIUS
5-6	7	42° 16' 22" RT.	699.33'

PT-PT	CHORD BEARING	CHORD DISTANCE	ARC LENGTH
5-6	N 07° 01' 37" W	504.34'	515.96'



NOTES:
 1. SUBJECT PROPERTY REFERENCES:
 OWNER: SIRRINE ST, LLC
 TMS # 350-00-00-018
 DEED: BOOK 1742 PAGE 141
 PLAT: BOOK A875 PAGE 2

2. THE GENERAL UTILITY EASEMENTS ARE 20' WIDE, 10' EITHER SIDE OF PROPERTY LINE AS SHOWN, CREATED BY THIS SURVEY AND INTENDED FOR USE AS UTILITY CORRIDORS FOR CONSTRUCTION OF VARIOUS UTILITIES - POWER, WATER, COMMUNICATIONS, ETC. AS NEEDED TO SERVE THE TRACTS CREATED BY THIS SURVEY.

3. I HEREBY CERTIFY THAT I HAVE CONSULTED THE FEMA FLOOD INSURANCE RATE MAP AND TO THE BEST OF MY KNOWLEDGE, BELIEF, AND INFORMATION, THE SUBJECT PROPERTY AS SHOWN HEREON IS LOCATED IN ZONE "X" AND IS NOT IN A FEMA DESIGNATED SPECIAL FLOOD HAZARD ZONE.

COMMUNITY PANEL NUMBER: 45059C0191C
 COMMUNITY PANEL DATE: AUGUST 16, 2012
 COMMUNITY PANEL NUMBER: 450